

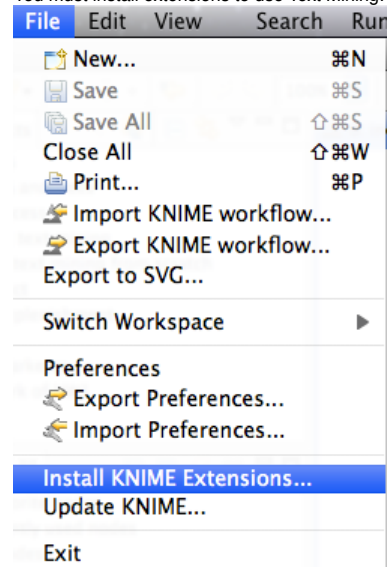
To install KNIME, go to <http://knime.org/downloads/overview>  
Download the version for your OS (64-bit if you have a 64-bit machine).

To get started, go to <http://tech.knime.org/documentation> and read the basic documents on how to use KNIME effectively. We will be walking step-by-step in the class.

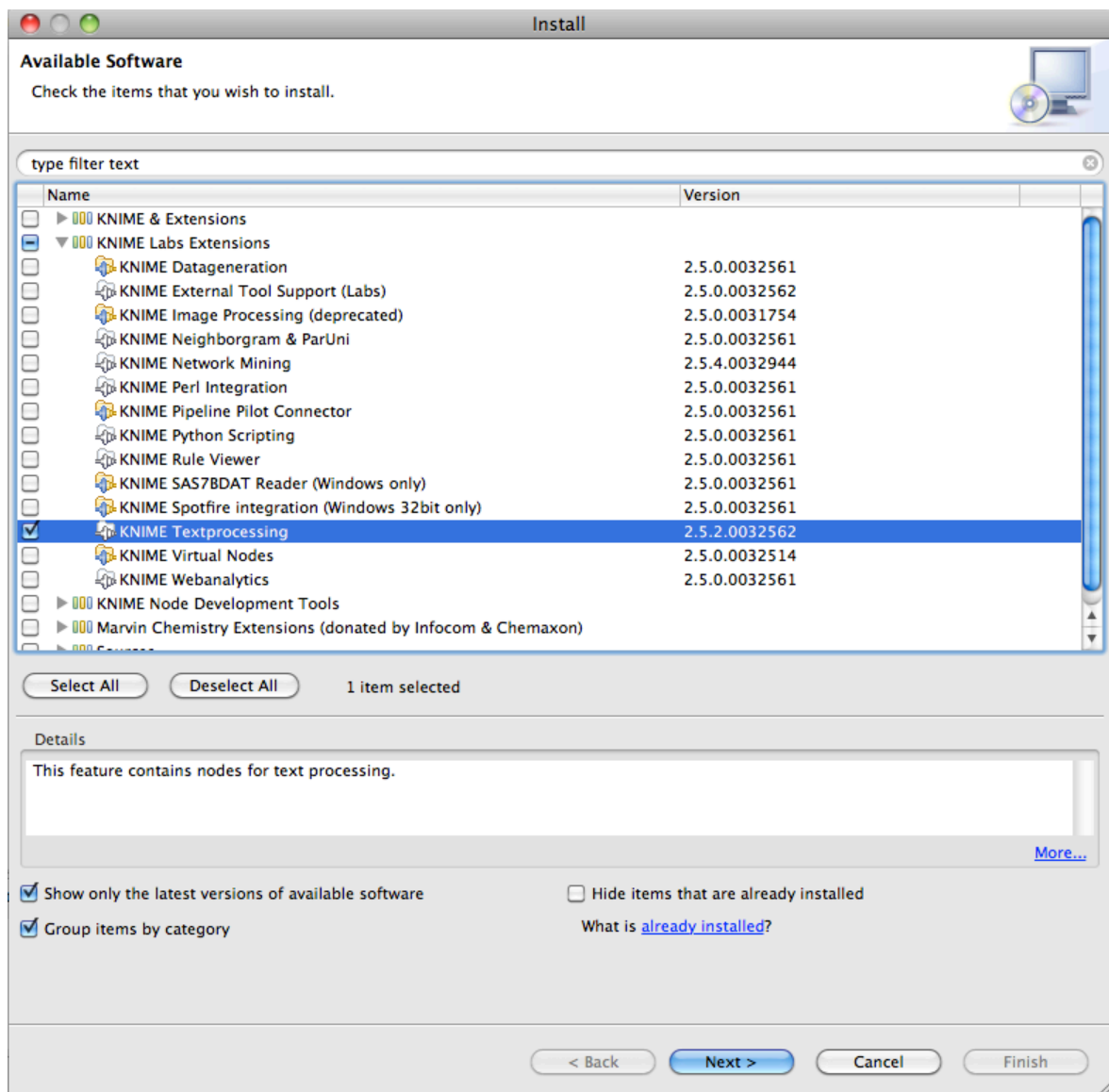
The Workflow I am using uses two KNIME extensions:

- 1) KNIME TextProcessing (Part of the KNIME Labs Extensions library)
- 2) KNIME Math Expression (Part of the KNIME & Extensions library)

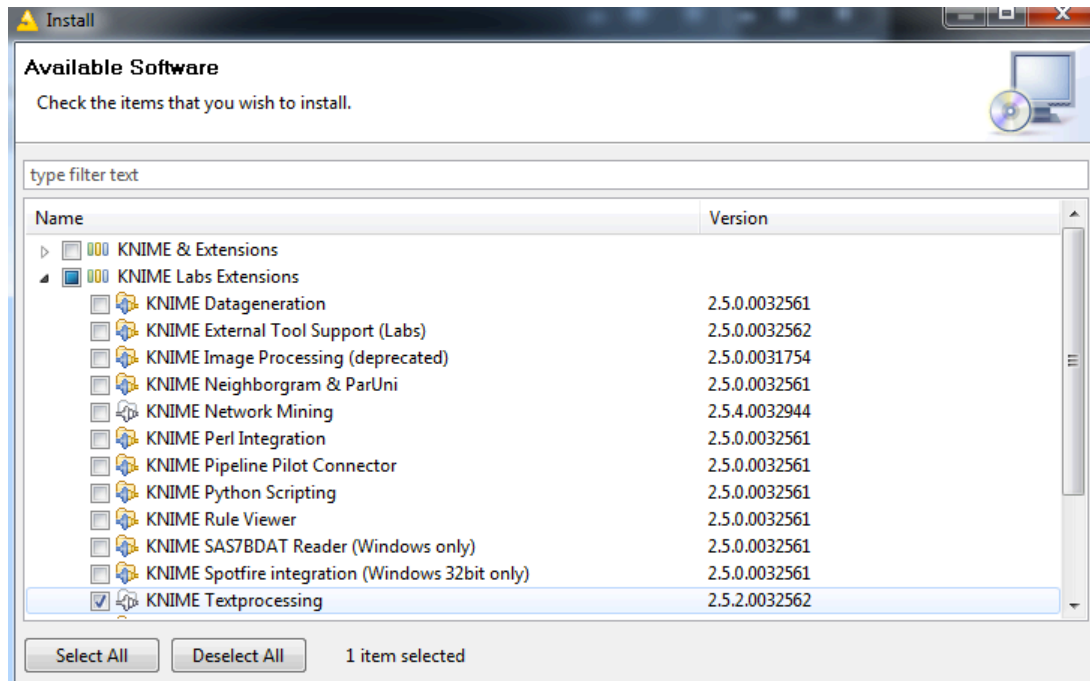
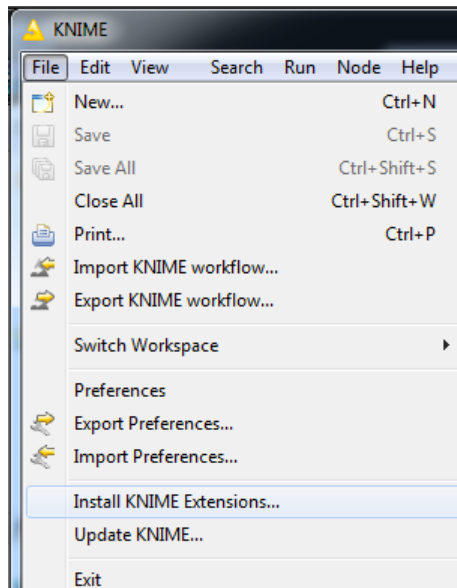
You must install extensions to use Text Mining:



For Text Mining, installing on the Mac,...



On the PC:



Also install KNIME Math Expression (JEP)  
For the Macintosh, it looks like this...

Install

**Available Software**  
Check the items that you wish to install.

type filter text

Name	Version
<input type="checkbox"/> ▶ Cloud Integration Features (optional)	
<input type="checkbox"/> ▶ Core Features	
<input type="checkbox"/> ▶ Hadoop Integration Features (optional)	
<input type="checkbox"/> ▶ Hadoop Integration Features (optional, use only one)	
<input checked="" type="checkbox"/> ▼ KNIME & Extensions	
<input type="checkbox"/> KNIME Base Chemistry Types & Nodes	2.6.1.0034734
<input type="checkbox"/> KNIME CDK Chemistry Feature (deprecated)	2.6.0.0034434
<input type="checkbox"/> KNIME Chemistry Add-Ons	2.6.1.0037495
<input type="checkbox"/> KNIME Core	2.6.4.0037495
<input type="checkbox"/> KNIME Distance Matrix	2.6.0.0034515
<input type="checkbox"/> KNIME Ensemble Learning Methods	2.6.1.0037495
<input type="checkbox"/> KNIME External Tool Support	2.6.0.0035081
<input type="checkbox"/> KNIME HTML/PDF Writer	2.6.0.0034434
<input type="checkbox"/> KNIME Itemset Mining	2.6.0.0034849
<input type="checkbox"/> KNIME JFreeChart	2.6.0.0034434
<input type="checkbox"/> KNIME LIBSVM Integration	2.6.0.0034597
<input checked="" type="checkbox"/> KNIME Math Expression (JEP)	2.6.0.0034434
<input type="checkbox"/> KNIME Nodes to create KNIME Quick Forms	2.6.1.0034734
<input type="checkbox"/> KNIME Public Server View	2.6.4.0037495
<input type="checkbox"/> KNIME R Statistics Integration	2.6.0.0034434

For more information on getting started with KNIME:  
[http://tech.knime.org/files/KNIME\\_quickstart.pdf](http://tech.knime.org/files/KNIME_quickstart.pdf)